

2025

Report on Educational and Research Activities

2024 Annual Report

Fukuoka Institute of Technology

Fukuoka Institute of Technology, Junior College

Jyoto High School

Content

I. School Profile	
Basic Info	1
History	1
Academic Structure and Enrollment	2
FIT in Numbers	2
External Evaluations	3
Campus Overview	3
About University Access and Fukuoka City	4
II. Outline of educational and research activities	
Overall Results	4
About Education	5,6
About the Study	7,8
About Regional Cooperation	8
About Employment	9,10
About Globalization	10
III. Graduate School Overview	11,12
IV. Contact Information	12

For all the students
～すべての学生生徒のために～

Founding Principles

- Cultivate the character of students and foster a global citizenship mindset
- Explore the truths of the universe to move society into the future by making real-world applications
- Following in the spirit of mankind, freedom, peace, and faith, we support students to succeed after graduation.

Management Philosophy

For all the students

Motto

Just Do It!

Management Goals

Demonstrate educational and research capabilities in the fields of information, environment, and manufacturing, and contribute widely to society.

■Institution : Private University
 ■Campus Organizations :
 Fukuoka Institute of Technology
 FIT, Junior College
 Jyoto High School

■Location : 3-30-1 Wajiro Higashi,
 Higashi-ku, Fukuoka City,
 Fukuoka 811-0295, Japan

There are three schools
 on one campus

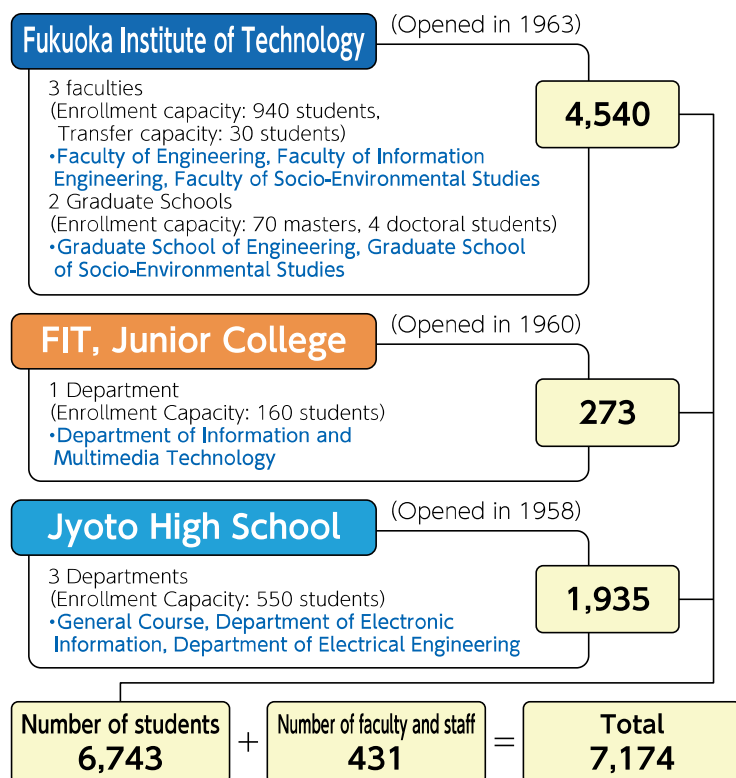
Fukuoka City has 1.6M,people
 5th largest city in Japan



History

I . School Profile

Year	Establishment of schools, faculties, etc., name changes, etc.
April 1954	Establishment of Fukuoka Higher School of Wireless Telegraphy.
April 1958	Fukuoka Denpa Gakuen High School, a private educational institution, was established.
April 1963	Fukuoka Denpa Gakuen University of Electronic Engineering opened, and the Faculty of Engineering was established.
April 1966	The university was renamed "Fukuoka Institute of Technology" and the junior college was renamed "Fukuoka Institute of Technology, Junior College"
April 1993	Graduate School of Engineering (Master's Program) established.
April 1997	Establishment of the Faculty of Information Engineering at the University.
April 1999	Graduate School of Engineering (Doctoral Program) established.
April 2001	Establishment of the Faculty of Socio-Environmental Studies at the University.
April 2007	Graduate School of Socio-Environmental Studies (Master' s Program) established.



*Number of students, students, faculty and staff: As of 2025.5.1

University Faculties

Faculty of Engineering (4 departments)

- Department of Information Electronics
- Department of Life, Environment, and Applied Chemistry
- Department of Intelligent Mechanical Engineering
- Department of Electrical Engineering

Faculty of Information Engineering (4 departments)

- Department of Computer Science and Engineering
- Department of Information and Communication Engineering
- Department of Information Systems Engineering
- Department of Information Management

Faculty of Socio-Environmental Studies (1 department)

- Department of Socio-Environmental Studies

Center for Liberal Arts

Graduate School Majors

Graduate School of Engineering

Master's Program (8 majors)

- Information Electronics
- Life, Environment, and Applied Chemistry
- Intelligent Mechanical Engineering
- Electrical Engineering
- Computer Science and Engineering
- Communication and Information Networking
- Information and Systems Engineering
- Systems Management Engineering

Doctor's Program (2 majors)

- Material Science and Production Engineering
- Intelligent Information System Engineering

Graduate School of Socio-Environmental Studies

Master's Program (1 major)

- Socio-Environmental Studies

FIT in Numbers

I . School Profile

<Education & Research>

Private University Reform Comprehensive Support Program Selection Results

3rd Nationwide

*For details, see page5

Amount of Competitive Grants Awarded for Education Reform and Improvement-related Projects

Approximately ¥2.8 billion

(Results since FY2008)

External research funding
*Excluding funds received for co-investigators and funds allocated to external co-investigators

Approximately ¥210 million

(FY2024 results)

Number of international faculty members

16 members

(As of May 1, 2025)

<Employment & Career Outcomes>

Students who secured employment at their company of choice

98.1%

(March 2025 graduates)

Students employed by Listed, Major, or Mid-sized Companies

75.8%

(March 2025 graduates)

Satisfaction with FIT's employment support (FIT questionnaire)

99.3%

(March 2025 graduates)

Graduates Leaving Employment within Three Years (FIT questionnaire)

9.2% (National average 34.9%)

(Turnover rate within 3 years for new graduates)

<Student Life>

Number of clubs and circles

59 organizations

(Including student organizations such as FIT girls' association)

Number of scholarship students

663 students

(1 in 8 successful applicants are selected as scholarship students)

<External Agreements>

Number of Overseas Partner University

47 universities

(As of July 2025)
*For details, see page10

Number of Community Partnership Agreements

29 organizations

Local governments, companies, educational institutions, etc.

<Facilities・Equipment>

Number of PCs installed on campus

Approx. 5,000 units

Number of Books in the Library

341,405 volumes

(As of March 31, 2025)

Number of Research Labs

146 Rooms

Time from the nearest station to the university

Direct connection to station (0-minute walk)

External Evaluations

I . School Profile

THE Japan University Ranking:

~University rankings in Japan published by Times Higher Education (THE), a British higher education magazine~

Overall ranking

4th in Kyushu Private Universities

Nikkei Career Magazine Special Editor "Valuable Universities Employability Ranking 2025-2026" (Nikkei HR)

Employment Support System
(Ranking by Initiative)

1st in Japan

Research Capabilities

1st in Kyushu Private Universities

Human Resource Development:

1st in Kyushu Private Universities

"Sunday Mainichi (Mainichi Shimbun Publishing)" (September 15, 2024)

Student Care

5th in Japan
(1st in Kyushu)

Employment Focus

1st in Kyushu Private Universities

Small-Sized University:
Overall Ranking

16th in Japan
(3rd in Kyushu)

"University Search Ranking Book 2025" (DAIGAKUTSUSHIN Corporation)

Student Care

5th in Japan
(1st in Kyushu)

Employment Focus

7th in Japan
(1st in Kyushu Private Universities)

From Our Own Questionnaires

Why did you choose Fukuoka Institute of Technology?



1st: Strong employment track record



2nd: Opportunities for personal growth



3rd: Excellent facilities and equipment

After starting school, what did you like about Fukuoka Institute of Technology?



1st: Beautiful campus



2nd: Strong faculty and staff support



3rd: Positive and engaging atmosphere

Highly rated for education, employment support, and student care

Campus Overview

I . School Profile

Main school buildings and facilities



Panoramic view of the school



School approach



University Building B



FIT Arena



Building F Incubation Studio 2 (EV Experiment)



Electronics Research Institute Measurement Center



Anechoic chamber



University scenery



Global Student Lounge



Barbecue facility interior view



FIT Seminar House (Yufuin, Oita Prefecture)

■ FUKUOKA – the best place to live and study

Fukuoka City is a city that harmonizes rich nature and urban functions, and is attractive for its international character that takes advantage of its food culture, history, and proximity to Asia. It has good transportation and is highly regarded both domestically and internationally for its ease of living. Fukuoka Institute of Technology, located in Fukuoka City, is attractive for its location near both the bustling city and rich nature.



Fukuoka City's Advantages:

- Gateway to Asia: One of Japan's most internationally connected cities
- Low cost of living: Ranks 1st among Japan's 8 major cities for affordability
- Excellent accessibility: 5 minutes to Fukuoka Airport from city center
- Short commute times: Ranked 1st in Asia and 7th globally
- Global recognition: Consistently ranked among the world's most livable cities
- Strategic location: Direct flights to major Asian cities



Photograph(s) provided by Fukuoka City.



From Fukuoka Airport

Fukuoka Airport	Subway 5 minutes (¥260)	Hakata Station	JR Kagoshima Line (rapid train) 15 minutes (¥340)	FIT front Station
-----------------	-------------------------------	----------------	---	-------------------

From Hakata Station

Hakata Station	JR Kagoshima Line (rapid train) 15 minutes (¥340)	FIT front Station
----------------	---	-------------------

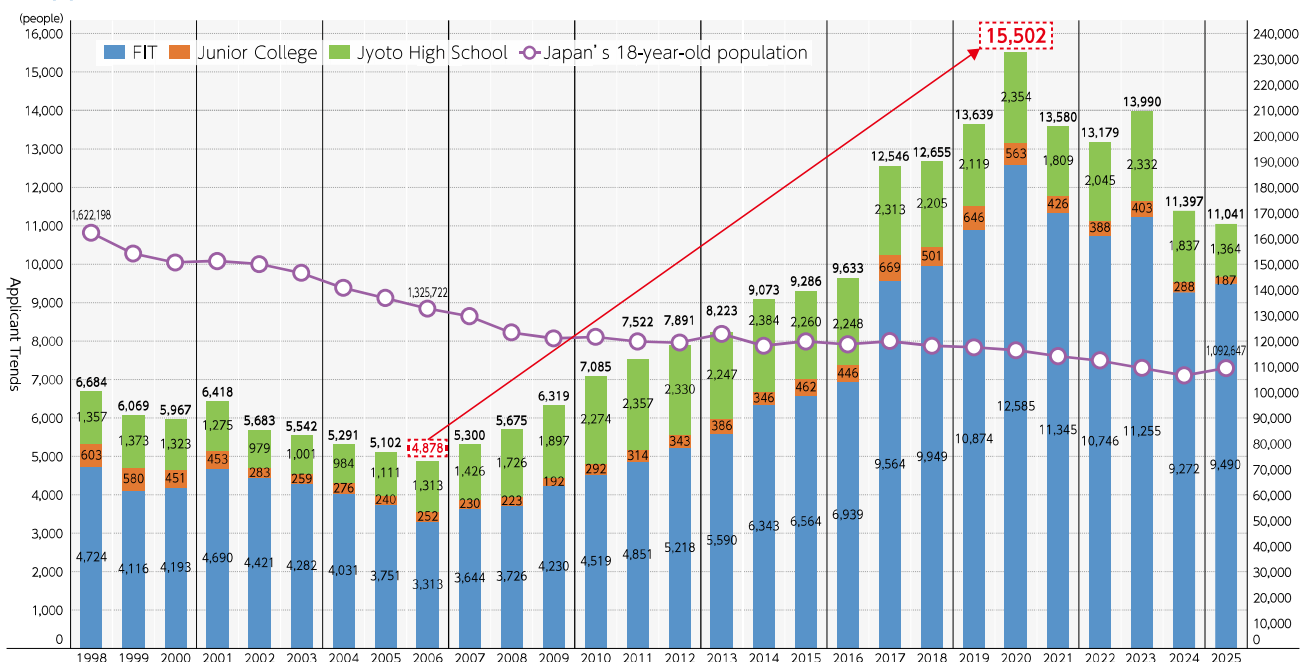
From Tenjin area

Tenjin	Nishitetsu Bus (Urban Expressway) 30 minutes (¥600)	FIT front bus stop
--------	---	--------------------

Overall Results

II. Outline of Education and Research Activities

■ Applications for Admission



Continuous increase for 14 consecutive years, remaining at a consistently high rate thereafter

Results of Educational Activities (1)

II. Outline of Education and Research Activities

■ Results of the Comprehensive Support Project for the Reform of Private Universities (2013 support project establishment - 12 years)
3rd place out of approximately 910 schools nationwide “One of the best results in the country”

Rank	Institution	2013	2014	2015	2016	2017	2018	2019	2020	2021	2022	2023	2024	Total Points	Yearly Average
1	Shibaura Institute of Technology	3	4	4	4	4	4	4	4	4	4	4	4	47	3.9
2	Kanazawa Institute of Technology	3	4	4	4	3	4	4	4	3	3	4	4	44	3.7
3	Fukuoka Institute of Technology	1	4	3	4	4	4	3	4	3	4	4	3	41	3.4
4	International University of Health and Welfare	3	4	4	4	4	3	2	3	3	2	3	3	38	3.2
4	Tokyo Denki University	3	2	1	3	2	3	4	4	4	4	4	4	38	3.2
6	Tokyo City University	0	0	1	4	4	5	3	4	4	4	4	4	37	3.1
7	Fujita Health University	0	0	3	3	3	3	4	4	4	4	4	4	36	3.0
8	Kwansei Gakuin University	1	3	3	3	4	3	3	3	2	2	4	4	35	2.9
8	Nagasaki International University	1	0	4	4	5	4	3	4	3	2	3	2	35	2.9
10	Tohoku University of Community Service and Science	1	2	3	3	3	4	3	3	3	3	3	3	34	2.8
10	Ritsumeikan University	2	3	2	2	3	3	3	3	3	3	4	3	34	2.8
10	Osaka Medical and Pharmaceutical University	2	1	1	2	3	3	4	2	3	4	5	4	34	2.8
10	Kansai University	2	3	2	3	2	4	4	3	3	3	3	2	34	2.8

What is the Comprehensive Support Project for Private University Reform?

The Comprehensive Reform Support Project is a system in which the Ministry of Education, Culture, Sports, Science and Technology supports the educational and research reform of private universities. Universities that engage in this project are assessed as "universities that are undergoing reform" and are granted subsidies.

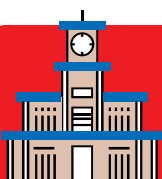
Ranked third in the country among 910 private universities and junior colleges nationwide

Results of Educational Activities (2)

II. Outline of Education and Research Activities

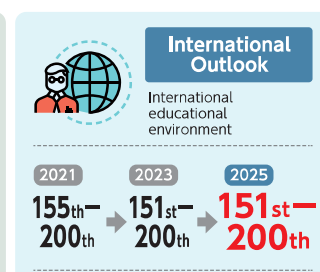
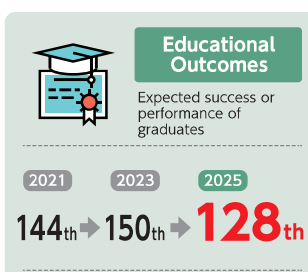
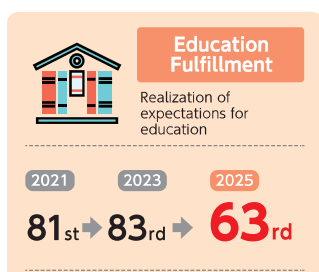
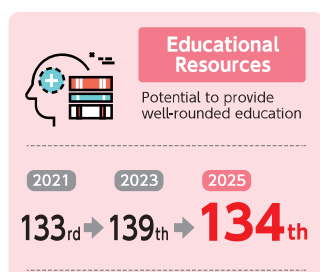
■ High Ratings in THE Japan University Rankings

The Japan University Rankings published by the UK-based higher education magazine Times Higher Education (THE)



Overall ranking – Private Universities in Kyushu – 4th

1. Ritsumeikan Asia Pacific University 2. Seinan Gakuin University
 3. University of Occupational and Environmental Health



[Features of the ranking]

The “Teaching-Focused University Ranking” emphasizes the quality of student learning and their growth. In addition to evaluating the university’s educational reforms and efforts to promote globalization, it also incorporates student surveys. While general domestic university rankings mainly focus on academic ability at the time of admission, this ranking highlights the quality of learning and student development.

Educational improvements have yielded tangible results, resulting in a higher ranking.

■Active Learning

Approximately 80% of our courses are active learning classes that incorporate interaction and discussions between students during classes.



Nikkei Career Magazine Special Edition
"Universities' Employability Ranking 2023-2024"

13th in Japan out of universities with a "well-established learning environment" and the No.1 private university in Kyushu and Okinawa

"The facility development was highly evaluated. The expansion of the 'Learning Commons', a learning space that encourages students to learn independently, was highly ranked. It is the best learning environment"

■FIT-Join Activities

Student FIT Staff (FIT-Join) foster a vibrant learning community by connecting students with faculty and staff to develop improvement initiatives from the student perspective.

Key activities include:

- Roundtable discussions between faculty and students
- General membership meetings
- Publication of the public relations magazine ""Future Design""
- Student course evaluation surveys
- Coordination of freshman orientation and exchange events



Group work during the FIT-Join training camp



Group photo of FIT-Join members

Developing diverse learning opportunities that challenge students and supports their growth

Project-Based Learning (PBL) at FIT

■Project-Based Learning (PBL)

As a core component of our active learning approach, FIT emphasizes Project-Based Learning (PBL). Through this methodology, students address real-world challenges faced by companies and governments in Japan and internationally. The PBL process develops: Research and analytical skills through investigation/Critical thinking through discussion and analysis/Collaborative abilities through group work/problem-solving capabilities through hands-on application. Students gain practical experience and knowledge by tackling authentic challenges independently and collaboratively.

◆Highlights 1◆

Faculty of Engineering FIT-gPBL Department of Electrical Engineering× University of British Columbia (UBC), Canada

We formed a hybrid team to work together on the optimal configuration of concentrator photovoltaic (CPV) module incorporating power electronics technology and a supercapacitor as an energy storage device.



Workshop conducted by a mixed team



◆Highlights 2◆

Contribution to the community × Practical education and research



Students presenting this year's achievements



Scene of corn harvesting

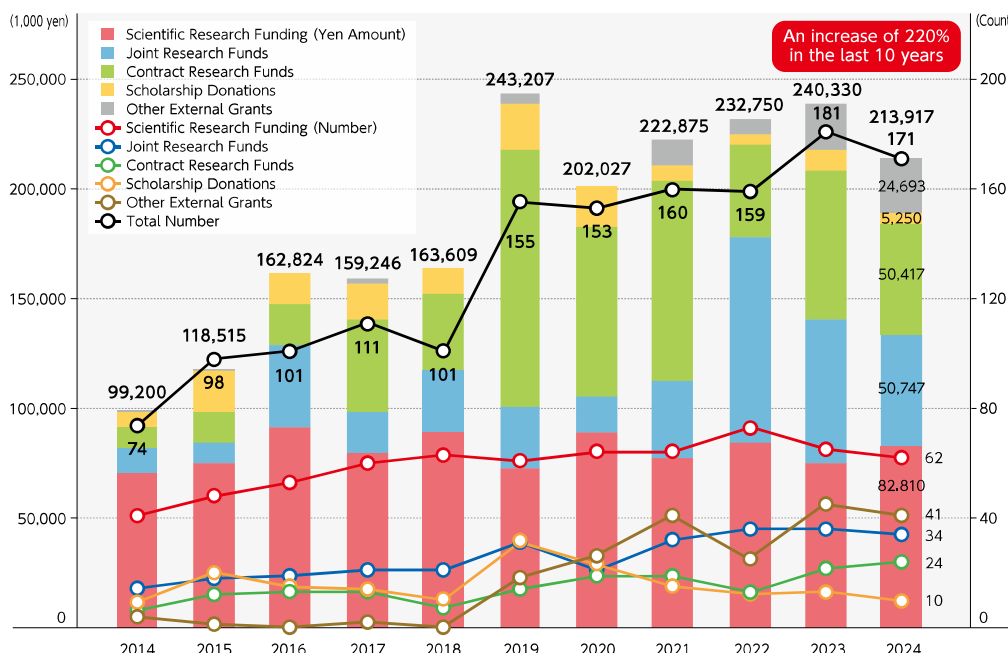
Since 2018, the Kitazaki Laboratory (Department of Electrical Engineering) has partnered with local farmers to improve sweet corn quality and enable early harvesting through plasma irradiation technology. Concurrently, the lab is developing IoT-based fixed-point observation systems for farm monitoring. In FY2024, research findings were presented to partner organizations at a dedicated symposium.

Gain practical experience through programs in Japan and overseas, further developing problem-solving skills.

Results of Research Activities

II. Outline of Education and Research Activities

External Research Grants (Grants for Scientific, Joint and Contract Research, etc.)



Introducing our research

Research Organization



Special Research Site



Research Highlights



Patents and Innovations



Public and private research support (research grants) is stable and increasing considerably

Featured Research Projects (1)

II. Outline of Education and Research Activities

Introduction of advanced research cases at our university

◆Highlights 1◆

Creating greater value at the intersection of healthcare and AI.



In summer 2025, Professor Tokuyasu of the Department of Information Systems Engineering achieved three major milestones in the field of AI-based healthcare. At the Japan Society of Gastroenterological Surgery, he gave a lecture on the digitization of surgical data and the future of medical care using AI. Furthermore, he was selected for PARKS Step2 for the commercialization of "Smart OpeRec," a system that automatically generates surgical records from surgery videos, contributing to reducing the workload of doctors. In addition, the results of our joint research have been published in the international journal "Surgical Endoscopy", receiving high praise both domestically and internationally.

◆Highlights 2◆

Utilizing "sediment accumulation" to restore clams while addressing the risk of dam flooding.



Professor Tai of the Department of Socio-Environmental Studies is conducting research to regenerate the habitat of declining clams by utilizing sediment deposited in dams for tidal flats in the Ariake Sea. As a result of spraying sediment from the Midorikawa Dam in Kumamoto Prefecture on the tidal flats, it was confirmed that the growth of clams was promoted by up to 2 times. This initiative, which simultaneously addresses the sediment problem and restores fishery resources, was highly evaluated and received the Minister of the Environment Award. In the future, we will continue to elucidate the growth mechanism and aim to contribute to sustainable fisheries.

Gaining international and domestic acclaim for cutting-edge research.

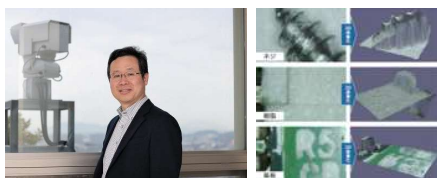
Featured Research Projects (2)

II. Outline of Education and Research Activities

Introduction of Advanced Research Cases at our University

◆Highlights 3◆

Fusion of AI and image processing:
optimization of 3D image measurements.



Professor Roh of the Department of Information Electronics has been focusing on 3D image measurement and microwave image measurement for more than a decade. He has developed technology that enables 3D measurement from 2D microscopic images, as well as technology that acquires and measures 3D images of sea level in real time, in order to determine when tsunamis will occur. Currently, he is focused on original research combining AI and image processing with the aim of collaborating with overseas universities.

Special Research Website of the University



Holding the first international scientific conference of our university ~ICIESS 2024~

In October 2024, we held our first international science conference, ICIESS 2024. Scientists, engineers, experts, and others from various countries in the Asia-Pacific region, primarily partner universities, participated in the event. Research was shared with Fukuoka Institute of Technology academics and students from a wide range of fields. Our University also explored future educational and research collaboration with our partner universities.

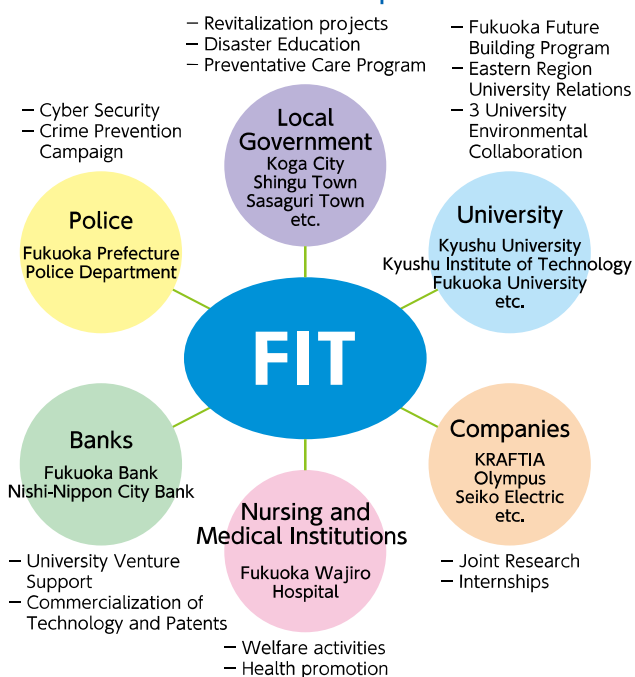


Promoting startups and large-scale project research

Results of Regional Cooperation

II. Outline of Education and Research Activities

Activities of the Social Cooperation Center



Partnership agreement signed with 29 municipalities, companies, educational institutions, and others

◆Highlights◆

[Fukuoka City × Department of Socio-Environmental Studies PBL]

"PBL on Tourism Promotion in Fukuoka Prefecture" We held a proposal presentation with the Fukuoka City Bureau of Economy, Tourism and Culture.



Scene of the proposal presentation



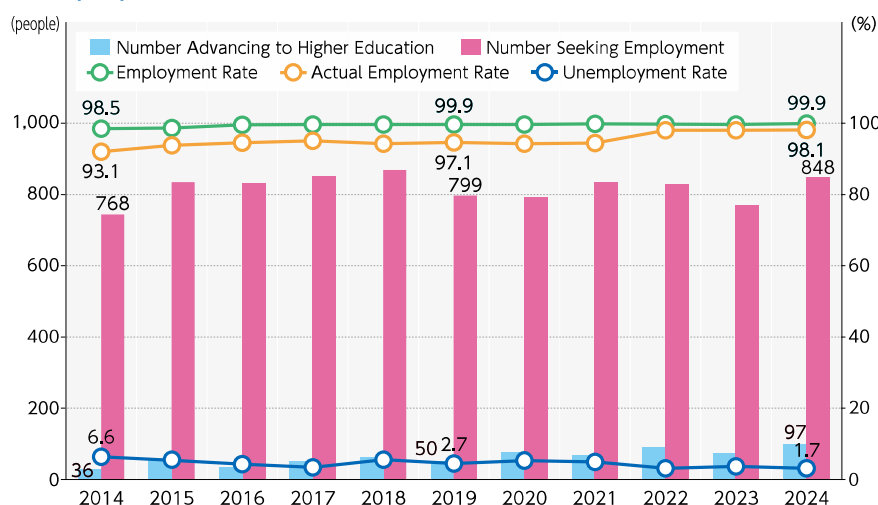
Group photo of participants

Contributing to the promotion of the economy, education, and culture of local communities, while promoting safety and security

Results of Employment and Career Support

II. Outline of Education and Research Activities

■ Employment Trends and Outcomes



Employment Rate

99.9%

(March 2025 graduates)

Actual Employment Rate

98.1%

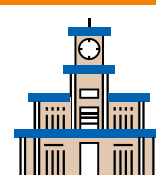
(March 2025 graduates)

Employment percentage from large and med-sized companies

75.8%

■ Maintaining High External Evaluation Standards

University Career Support Satisfaction Ranking



Ranked No.1 Nationwide University Ranking for Excellent Career Support
Ranked 1st in Japan in the "University Career Support Satisfaction Ranking" (Special Edition of Nikkei Career Magazine: Valuable University Employment Rankings 2025-2026)

Student Satisfaction Rate

99.6%

Employment at large and med-sized companies is stable at a high rate, as is students' job satisfaction.

Employment situation

II. Outline of Education and Research Activities

■ List of main employment destinations

Employment at "400 leading companies"

- Accenture
- Alpha Systems Inc.
- Alps Alpine Co., Ltd.
- ITO EN, Ltd.
- INTEC Inc.
- SMC Corporation
- NEC Solution Innovators, Ltd.
- NTT DOCOMO, INC.
- Ebara Corporation
- Otsuka Corporation
- The Kansai Electric Power Co., Inc.
- Canon System and Support Inc.
- Kyushu Electric Power Co., Inc.
- Kyushu Railway Company (JR Kyushu)
- KYOCERA Corporation
- CAC Corporation
- Shiseido Company, Limited
- Suzuki Motor Corporation
- Sumitomo Life Insurance Company
- Sekisui Heim Group
- Sekisui House, Ltd.
- ALSOK (Sohgo Security Services Co., Ltd.)
- Sompo Japan Insurance Inc.
- Daio Paper Corporation
- Daikwa House Industry Co., Ltd.
- Tokyo Electric Power Company Holdings, Inc.
- Tokuyama Corporation
- transcosmos inc.
- Nippon Corporation
- Nippon Telegraph and Telephone West Corporation (NTT West)
- West Japan Railway Company (JR West)
- Nissan Motor Co., Ltd.
- Nissin Foods Holdings Co., Ltd.
- COMSYS Holdings Corporation
- Nippon Steel Corporation
- Nippon Express Holdings, Inc.
- Japan Broadcasting Corporation (NHK)
- Japan Post Co., Ltd.
- Panasonic Holdings Corporation
- The Bank of Fukuoka, Ltd.
- FUJISOFT Inc.
- Fujitsu Limited
- FUJIFILM Business Innovation Corp.
- Mazda Motor Corporation
- Mitsubishi Motors Corporation
- Mitsubishi Electric Corporation
- MinebeaMitsumi Inc.
- Meidensha Corporation
- Yaskawa Electric Corporation
- Yamazaki Baking Co., Ltd.
- Yamato Transport Co., Ltd.
- Japan Post Bank Co., Ltd.

(In addition, there is a strong track record of graduates employed at listed leading mid-sized companies.)

400 leading companies: Selected by university news agencies based on the Nikkei Stock Average recruited stocks, company size, popularity, and popular company rankings among university students. *Listed in alphabetical order (Japanese syllabary). Company names are as of the time of hiring, and corporate designations are omitted. *FY2021-2023 results

Employment record with listed, leading mid-sized companies in Kyushu

- Applied Co., Ltd.
- ANA Fukuoka Airport Co., Ltd.
- FFG Securities Co., Ltd.
- The Oita Bank, Ltd.
- The Kagoshima Bank, Ltd.
- Kyushu Electric Power Co., Inc.
- Kyushu Railway Company (JR Kyushu)
- Qsol Co., Ltd.
- QTnet, Inc.
- KRAFTIA Corporation
- The Kumamoto Bank, Ltd.
- The Saga Bank, Ltd.
- Eighteenth Shinwa Bank, Ltd.
- Shin Idemitsu Co., Ltd.
- Seibu Electric & Machinery Co., Ltd.
- Japan Advanced Semiconductor Manufacturing, Inc.
- Zeolite Co., Ltd.
- ZENRIN Co., Ltd.
- Sony Semiconductor Manufacturing Corporation
- Daisho Co., Ltd.
- TOTO Ltd.
- Toyota Motor Kyushu, Inc.
- Nishi-Nippon City Bank, Ltd.
- Nishi-Nippon Railroad Co., Ltd.
- PIETRO Co., Ltd.
- Hirata Corporation
- The Bank of Fukuoka, Ltd.
- Fukuoka Chuo Bank, Ltd.
- Fukuoka Toyota Motor Co., Ltd.
- Mitsui High-tec, Inc.
- Yaskawa Electric Corporation
- Yanmar Construction Equipment Co., Ltd.
- Royal Holdings Co., Ltd.

*Listed in alphabetical order (Japanese syllabary). Company names are as of the time of hiring, and corporate designations are omitted.

Exceptional employment outcomes at top-tier companies, rivaling national and public university placement rates

Employment and Career Support Initiatives

II. Outline of Education and Research Activities

Career Education to Develop Practical Skills

◆Highlights◆

FIT-IT Seminar "Global Financial Markets and Japan - Fukuoka's Potential"

As part of our career education, we held a seminar with international financial advisors to give lectures and panel discussions on the themes of global financial markets, Japan's economic issues, and the potential of Fukuoka. It provided opportunities for students to learn about financial trends and develop the ability to connect their education with their future careers.



Fukuoka Prefecture International Financial Advisor Mr. Takahashi's lecture on "Trends in Global Financial Markets"



Panel discussion between Mr. Takahashi and students

Employment Support Initiatives

Key Programs



Unparalleled job hunting support

The university's unique "Joint Company Information Session." More than 700 companies participated.



Realize your dreams with a variety of employment support

Complete support of students' employment future thanks to our department-specific tutoring

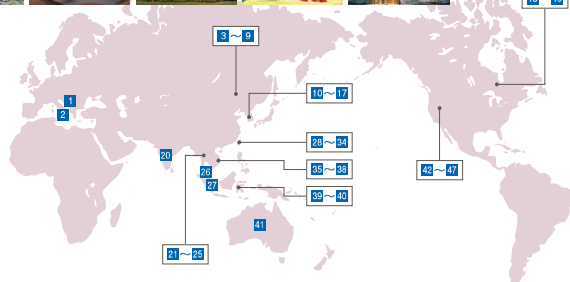
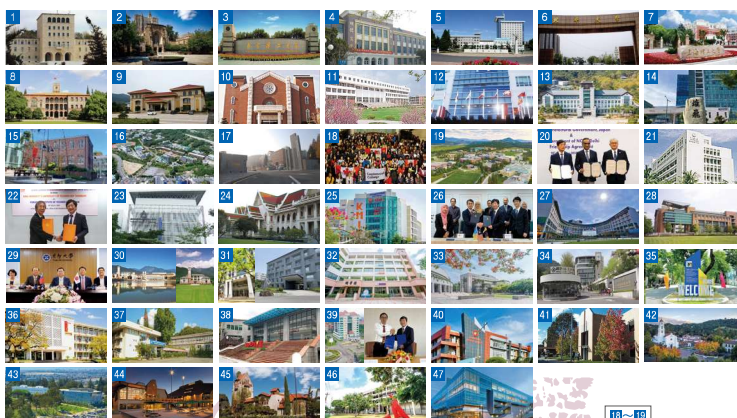
- Travel expense support for job hunting
- We have established a nationwide No.1 employment support system. For example: corporate exchange meetings.

Career education that fosters practical skills and thorough employment support contribute to improving job satisfaction

Internationalization efforts

II. Outline of Education and Research Activities

International Exchange Network



(Europe)

- 1 Albania
- 1 Polytechnic University of Tirana
- Italy
- 2 University of Naples Federico II
- (Asia)
- China
- 3 Nanjing University of Science and Technology
- 4 Qingdao University of Science and Technology
- 5 Dalian University of Technology
- 6 Beihua University
- 7 University of Shanghai for Science and Technology
- 8 Soochow University
- 9 Ludong University
- South Korea
- 10 Keimyung University
- 11 Ajou University
- 12 Kyung Sung University
- 13 Dongguk University WISE
- 14 Pukyong National University
- 15 Dong-A University
- 16 Changwon National University
- 17 Soon Chun Hyang University
- India
- 20 Delhi Board of School Education
- Thailand
- 21 King Mongkut's Institute of Technology Ladkrabang
- 22 King Mongkut's University of Technology Thonburi
- 23 Thai-Nichi Institute of Technology
- 24 Chulalongkorn University
- 25 CMKL University
- Malaysia
- 26 MARA University of Technology
- Singapore
- 27 Temasek Polytechnic

Taiwan

- 28 National Kaohsiung University of Science and Technology
- 29 Yuan Ze University
- 30 National Dong Hwa University
- 31 National Ilan University
- 32 Minghsin University of Science and Technology
- 33 National Yunlin University of Science and Technology
- 34 Ming Chi University of Technology
- Vietnam
- 35 The University of Danang-University of Science and Technology
- 36 Hanoi University of Science and Technology
- 37 Ho Chi Minh City University of Technology
- 38 Posts and Telecommunications Institute of Technology
- Indonesia
- 39 State University of Malang
- 40 Padang State Polytechnic (Oceania)
- Australia
- 41 Federation University Australia (North America)
- Canada
- 18 The Centennial College of Applied Arts & Technology
- 19 The University of British Columbia
- United States
- 42 Saint Mary's College of California
- 43 California State University, East Bay
- 44 Foothill College
- 45 San Jose State University
- 46 University of Hawai'i at Mānoa
- 47 San Francisco State University

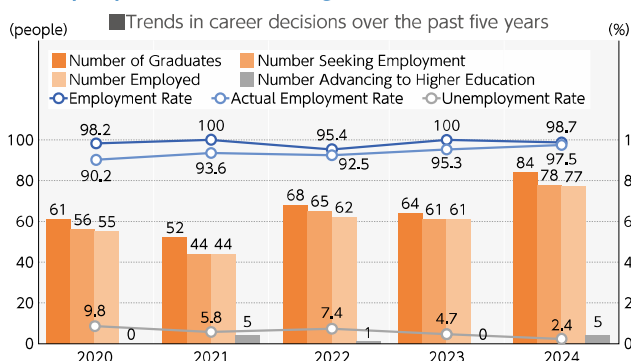
47 Partner Universities and Organizations

Expanding our global network and educational partnerships with overseas universities

Attractiveness of Graduate School (Characteristics and Employment)

Ⅲ. About the Graduate School

■ Employment status of graduate students



Employment rate

98.7%

Actual employment rate

97.5%

Number of graduates: 84
Number seeking employment: 78
Number employed: 77
Number advancing to higher education: 5

■ Features of the Graduate School

◆ Highlights 1 ◆

[Extensive Academic Presentation Achievements]

By the end of their program, Master's students will make an average of 3.5 conference presentations, both in Japan and abroad, and acquire the qualifications to be researchers. In addition, academic awards are given about 20 times a year, and we have achieved high results.



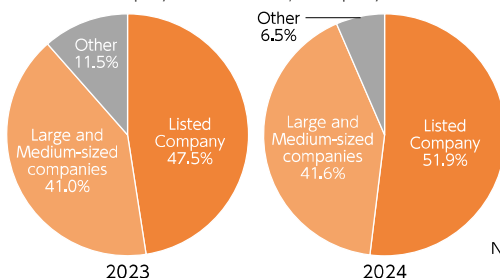
◆ Highlights 2 ◆

[Studying as a Junior Researcher]

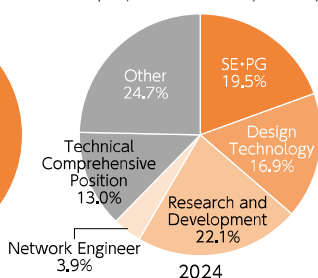
Graduate students are engaged in joint research between industry, academia, and government, aside their supervisors. In addition, as a research collaborator of the Grants-in-Aid for Scientific Research, students will accumulate research experience in cutting-edge research fields and cultivate their R&D skills and project leadership qualities.



■ Employment Status by Company Size



■ Employment Status by Job Type



Implementing various initiatives to improve research guidance, employability, and global competency

Graduate Student Achievements

Ⅲ. About the Graduate School

■ Graduate Students' Achievements

The 10th International Symposium on Surface Science (ISSS-10)
Received the "Student Prize"



At the international conference "ISSS-10" held in October 2024, students from the Maeda Laboratory of the Department of Information Electronics in the first year won the "Student Prize". The award-winning research "Graphene synthesis on silver foil by chemical vapor deposition using ethanol" was highly praised for the success of the CVD method using ethanol for the growth of graphene on silver surfaces and the elucidation of growth inhibition factors.

Introduction of the research themes of the awarded students

- Efficient Pattern Matching in Unordered Term Tree Patterns with Height Constraints (Department of Computer Science and Engineering)
- "Prediction of the Square Plate Natural Frequency by using the Mean Wavelength of the Actual Nodal Lines and the Modal Overlap Factor" (Department of Intelligent Mechanical Engineering)
- "U.S.-Europe Umbrella Agreement on the Protection of Personal Information in Crime Prevention and Investigation Framework for Personal Information Protection in Counter-Terrorism" (Department of Socio-Environmental Studies)

■ International Student Achievements

Doctoral Program, Department of Intelligent Information System Engineering
Ampiri Pudet (Graduated March 2025)
KMUTL University, Thailand

Outstanding Research Impact with High Citation Record

After arriving in Japan, Pudet demonstrated exceptional dedication to research, fully immersing himself in academic pursuits. He benefited from collaborative experiences in international laboratories with researchers from Asia, Europe, and beyond. His intensive research efforts resulted in numerous publications in leading academic journals and international conferences. These papers have garnered significant citations from researchers worldwide, demonstrating the high impact and quality of his work.



Featured in FIT Graduate School News Learn more about our graduates' achievements

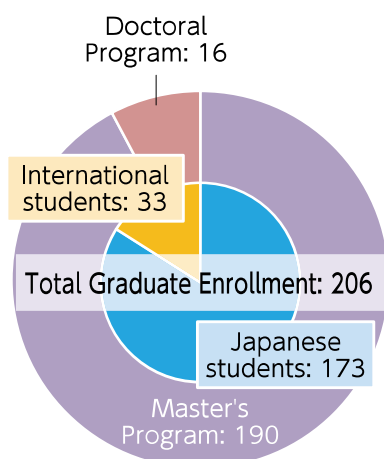
The number of students achieving excellent results is increasing, and international students are also active

Graduate School Environment and Financial Support

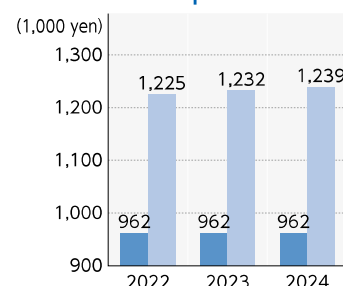
III. About the Graduate School

Number of Students and Faculty

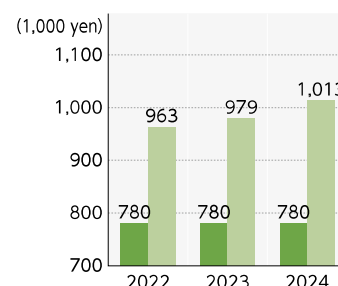
Country of origin of international students (including university, junior colleges, etc.): China, Thailand, South Korea, Taiwan, Nepal, Myanmar, Vietnam, Italy, Tonga, Honduras (As of 2025)



Tuition Comparison with National Graduate Schools



Compared to the national average, a difference of about ¥280,000 per year



Compared to the national average, a difference of about ¥230,000 per year

Enhanced Scholarship Programs

Program	Number of Recipients	Benefits
Special Academic Scholarship System	9 students in each year	Half of the tuition fee is subsidized
Scholarship Payment System	2 students per year for each major	¥80,000 per month
Subsidy system for travel expenses to attend conferences	Available to everyone	Almost all expenses required to participate in conferences are covered

Key Scholarship Features: •Special Academic Scholarship: 50% annual tuition reduction
•Monthly Stipend Program: ¥80,000 per month for selected students
•No repayment required for any scholarship program

We provide the opportunity to study with tuition fees below the national average.

University Resources and Contact Information

IV. Contact Information

FIT Website

<https://www.fit.ac.jp/>



Graduate School Website

<https://www.grd.fit.ac.jp/>



Social Media



Public Relations Magazine

FIT Brochure 2026



2025 Campus Mail



Research Highlights



Patent Invention



FIT CREATE The Future (Research BOOK)





For all the students

FIT Fukuoka Institute of Technology
福岡工業大学

Faculty of Engineering

Department of Information Electronics
Department of Life, Environment, and Applied Chemistry
Department of Intelligent Mechanical Engineering
Department of Electrical Engineering

Faculty of Information Engineering

Department of Computer Science and Engineering
Department of Information and Communication Engineering
Department of Information Systems Engineering
Department of Information Management

Faculty of Socio-Environmental Studies

Department of Socio-Environmental Studies

Center for Liberal Arts

Graduate School Majors

Graduate School of Engineering
Graduate School of Socio-Environmental Studies

FIT, Junior College

Department of Information and Multimedia Technology

Jyoto High School

General Course
Department of Electrical Engineering
Department of Electronic Information